

Easy DMX Interface

User Manual

Version 2.0

01.08.2022

Thank you for purchasing the Easy DMX Interface by Symph Electronics

© Symph Electronics SRL all rights reserved. Information subject to change without notice. Symph Electronics disclaim liability for any injury, damage, direct or indirect loss, consequential or economic loss or any other loss occasioned by the use of, inability to use or reliance on the information contained in this manual.

Table of Contents

1. Safety Information	1
2. Getting started	2
2.1 Features.....	2
2.2 What is inside the box.....	2
2.3 Connections and indicators.....	2
2.4 Basic Setup.....	3
3. Troubleshooting and Support.....	5
3.1 Troubleshooting	5
3.2 Maintenance and service	6
4. Specifications.....	7

1. Safety Information



Warning! Read this manual before operating the device, follow the safety precautions listed below and observe all warnings in this manual and printed on the device. Use this device only as described in this manual and accordance with local laws and regulations. There are no user-serviceable parts inside the device. Refer all service to Symph Electronics or your local distributor.

PLEASE recycle the shipping carton when ever possible.

To prevent or reduce the risk of electric shock or fire:

- This device must be operated in accordance with applicable national and local electrical and construction codes
- This device can be damaged by excess voltage outside the operating range.
- Do not connect this device to mains electricity.
- Isolate your installation from power immediately if accessories, power cables or connectors are in any way damaged, defective, or shows signs of overheat or are wet.
- Disconnect this device during cleaning or when is not in use.
- This device has an IP20 rating and it is not designed to be exposed to moisture and condensation
- Provide unrestricted airflow around the device and where possible keep this device out of direct sunlight.
- Do not operate the device if the ambient temperature exceeds 55 °C
- Do not modify the device in any way not described in this manual
- Do not crush the device during installation
- Do not over stretch cabling to the device's connectors and ensure that the cabling does not exert force on the PCB and its connectors.

2. Getting started

2.1 Features

- **Optical isolation**, provides complete electrical isolation between your PC and the DMX lines
- **Both 3 pin and 5 pin XLR outputs**, you don't need to carry XLR adapters
- **Each output is boosted** – you can connect to each XLR connector up to 32 units
- **Industry graded protection** circuit for the DMX line – each output contains a protection circuit against electrostatic discharge, electrical transients and surge.

2.2 What is inside the box

The interface is supplied in a cardboard box. The following items are included:

- Easy DMX interface
- USB-A to USB-B cable

2.3 Connections and indicators

1. **USB Connector** – connection with your PC
2. **RED LED** – indicate the POWER state of the device
3. **GREEN LED - blinking** – DMX is being sent by the Easy DMX
 - On (continuously)** – communication was interrupted, restore the connection
 - Off** – IDLE state, waiting for DMX signal
4. **DMX OUT** – 3 pin and 5 pin XLR connector used to send DMX signal to compatible DMX fixtures

2.4 Basic Setup

Easy DMX is based on the Enttec Open DMX protocol. Easy DMX driver is supported by the following Operating Systems: **Windows XP and later.**

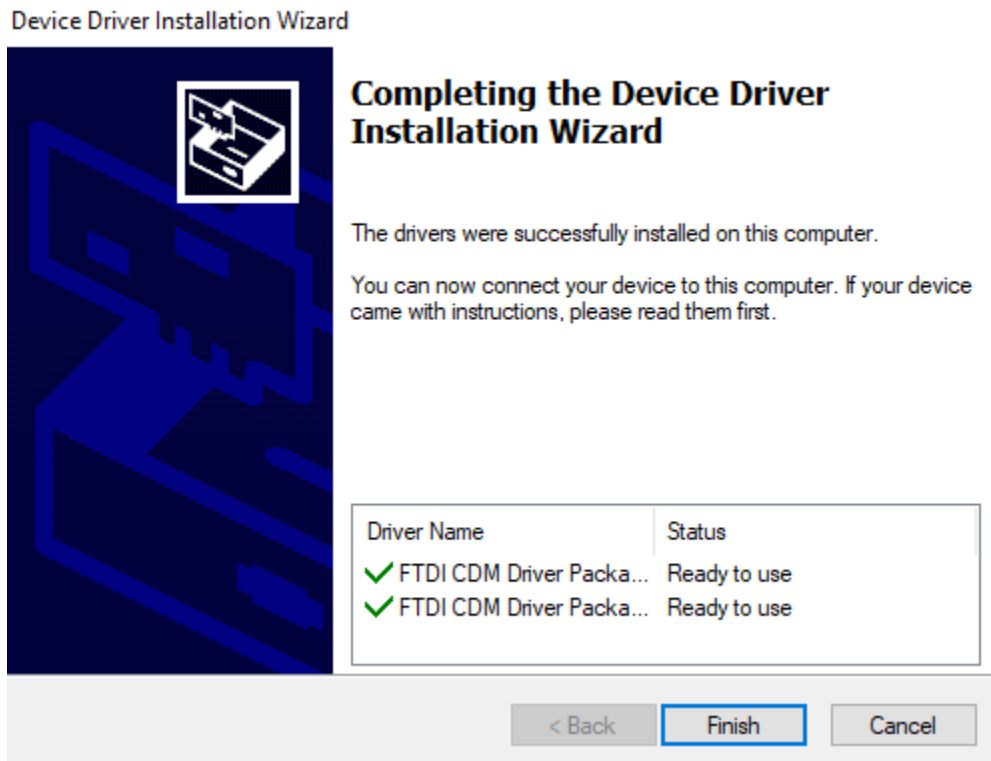
- For the latest drivers, please visit: <https://fdichip.com/drivers/d2xx-drivers/>

Installation steps:

- Visit de above link and download the latest driver

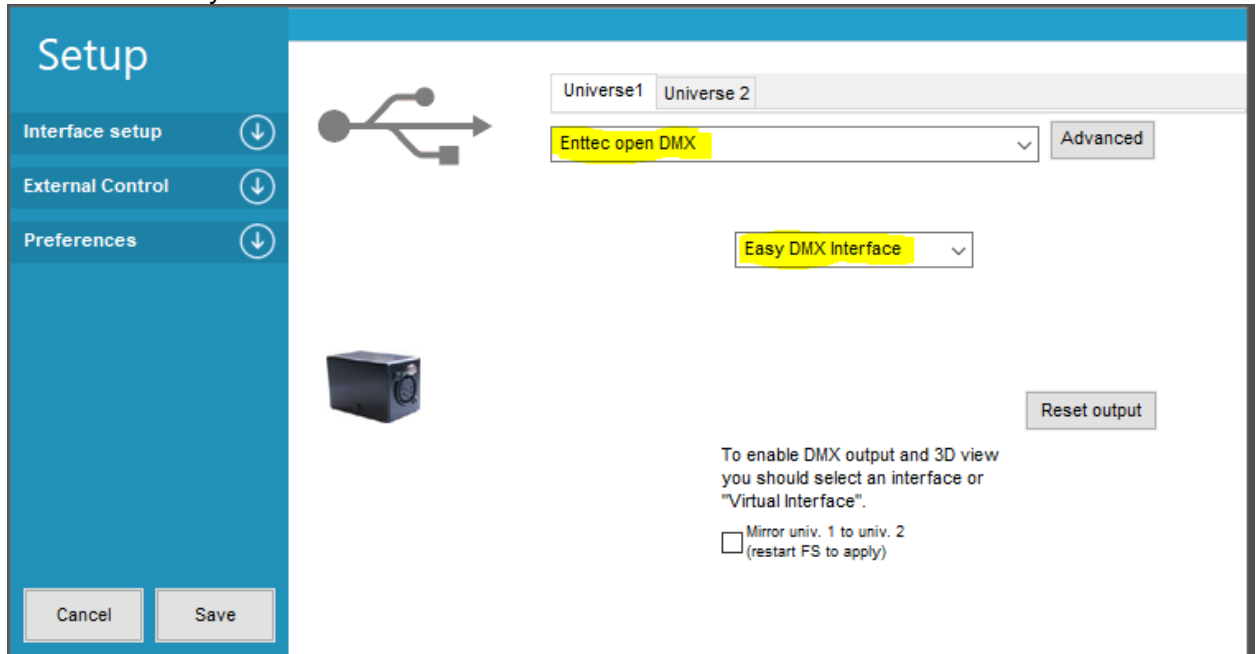
Operating System	Release Date	Processor Architecture					Comments
		X86 (32-Bit)	X64 (64-Bit)	ARM	MIPS	SH4	
Windows (Desktop)*	2021-07-15	2.12.36.4	2.12.36.4	2.12.36.4A****	-	-	WHQL Certified. Includes VCP and D2XX. Available as a setup executable . Please see the Release Notes and Installation Guides .
Windows (Universal)****	2021-11-12	2.12.36.4U	2.12.36.4U	-	-	-	WHQL Certified. Includes VCP and D2XX.
Windows RT	2014-07-04	1.0.2	-	1.0.2	-	-	A guide to support the driver (AN_271) is available here

- Unzip and launch the setup file. (if prompted by the Windows User Control, click YES)
- Follow the installation wizard. If the installation is completed properly you should see the bellow image.



- Connect the Easy DMX Interface to you USB port
- Download and install your preferred DMX software. (we recommend [Freestyler DMX](#))
The following steps may differ if you use different software:
- With your interface/s connected start Freestyler DMX

7. Go to **Setup** tab -> **Freestyler Setup** and select Enttec Open DMX and Easy DMX Protocol -> Easy DMX Interface



8. If you want to use 2 universes, you can repeat the process for Universe 2
9. Click Save and start controlling your fixtures. (for more details about Freestyler DMX read the software user manual and visit the forum)

3. Troubleshooting and Support

3.1 Troubleshooting

Trouble	Solution
RED LED - off	<ul style="list-style-type: none">• Check your USB cable• Visually check and clean the USB connector for presence of foreign materials, oxidation• Contact service
GREEN LED off - no DMX present at the output	<ul style="list-style-type: none">• Check if your DMX software is running. Replug and relaunch the software• Check your USB cable• Check for correct interface and protocol in your software• Check you laptop wasn't in sleep/standby mode• Send the product to service
GREEN LED blinking – no DMX signal at the output	<ul style="list-style-type: none">• Contact service
GREEN LED blinking – lighting fixtures behave strange	<ul style="list-style-type: none">• Check for correct interface and protocol in your software• Check the DMX Cable• Check your fixtures are not in stand alone or sound mode• Check for correct DMX Addressing• In case of some software the OS language may alter the data packets. Set the system language back to English• In ultimate case you can try reinstalling the OS• Contact service

3.2 Maintenance and service

- **The device has no user serviceable parts.**

We recommend to check monthly or more often for:

- Sign of **damage or corrosion** at connector level. In case of mild corrosion use a good quality contact cleaner. In case of more severe corrosion we recommend changing the part.
- **Dirt or dust** buildup. (see the recommended cleaning procedure)
- **Physical damage** at cabling level. If present change the parts.

Cleaning procedure:

Check for dirt or dust buildup at least monthly. The recommended maintenance schedule highly depends on the environmental conditions (eg: fog machines, airborne dust, etc).

- Unplug all cabling from the device
- Use a low-pressure compressed air to remove dust and dirt. We recommend compressed air cans or air compressor equipped with dryer and particle filter
- If necessary you can wipe the product with a damp microfiber cloth. **Do not use alcohol or solvent based chemicals, they can damage the plastic parts or the painting.** In case of severe dirt we recommend the use of foam cleaner for plastic.
Do not spray the device, always damp the microfiber cloth.

4. Specifications

Supply of power:	Power over USB DC 5V, 500mA
Output ports:	5-pin and 3-pin female XLR Each output is buffered
USB:	1x USB 2.0, Type A male plug
Galvanic isolation:	The input and output ports are isolated up to 1000V.
DMX line protection:	The device is equipped with an industry graded level 4 protection against electrostatic discharge, electrical fast transients and surge.
Software:	Freestyler DMX and many different Windows based DMX softwares
Housing:	ABS
IP Rating:	IP20
Temperature Range:	10°C - 50°C (operating condition) -10°C - 60°C (storage)
Relative Humidity:	5% - 80%
Dimensions:	100 x 67.4 x 35 mm
Weight:	110 gr (net)